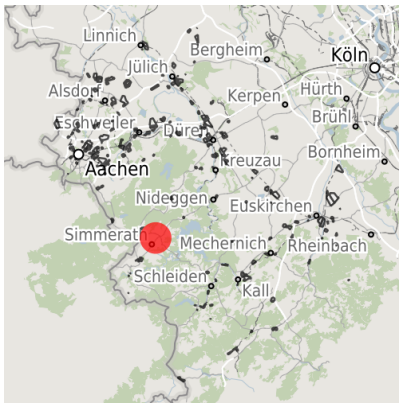


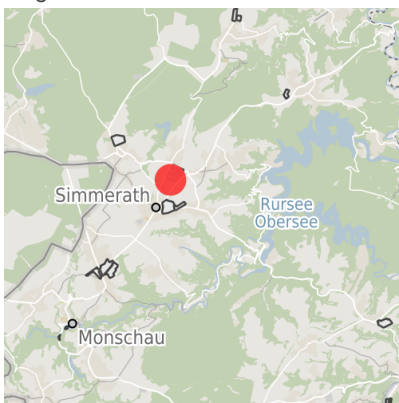
Factsheet parcel

Designation	Gewerbe- und Industriegebiet Rollesbroich (No. 085)
Area size	3,500 m ²
City / district	Simmerath, StädteRegion Aachen

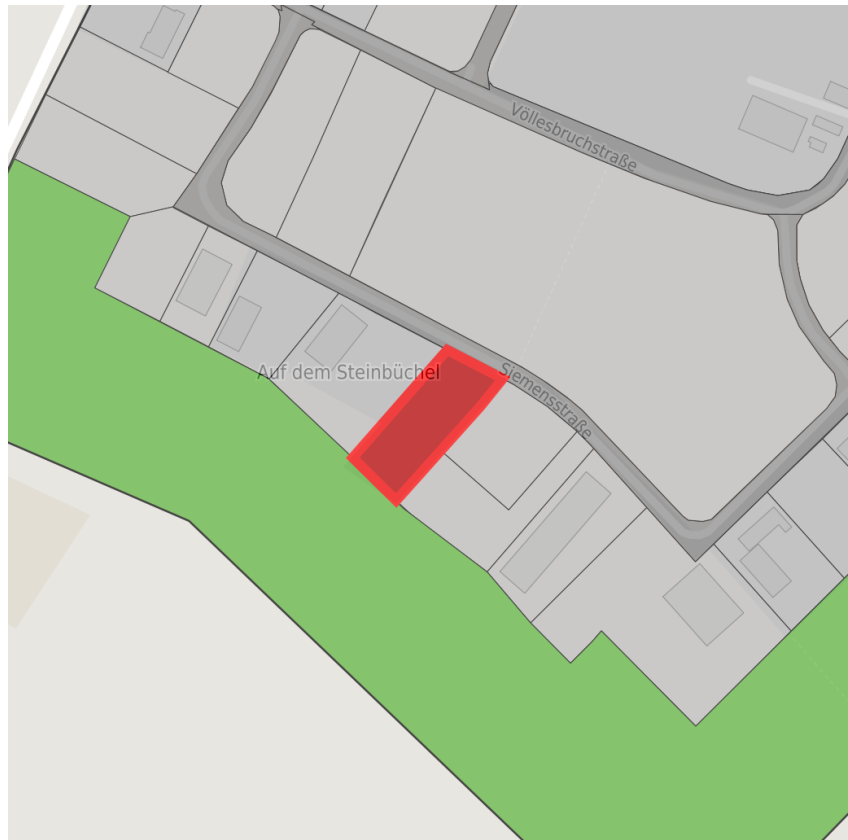
Map view



Regional overview



Municipal overview



Detail view

© [OpenStreetMap](#) contributors.

Availabilities

- | | | | |
|----------------------------|--|---|---|
| Immediately available area | Available area within short term (< 2 years) | Available area within medium term (2-5 years) | Available area within Long term (> 5 years) |
| Not available area | | | |

Other areas

- | | | | |
|-------------------|--------------|--------------------------------|-------------|
| Private ownership | Water area | Rail area | Street area |
| Green area | Living space | disposal/supply infrastructure | Other Area |

Parcel

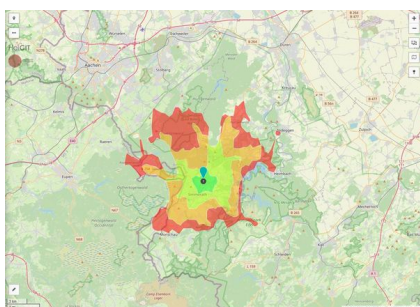
Area size	3,500 m ²
Price	On Demand
Availability	Immediately available area
Area designation	Commercial zone
Divisible	No
24h operation	No

Commercial zone

Rollesbroich

Since 1989 over 35 businesses have benefited from the locational advantages in the Rollesbroich commercial and industrial zone. By employing needs-oriented space development the location focuses on continuous growth. The dimensions of the commercial lots can be adapted to the companies' needs. SMEs in particular value the innovative milieu which has established itself above all since the start-up and service center was opened in 2002.

Location	Outskirts
Main companies	Fa. Schwarz, Fa. SEM Stollenwerk Elektro- und Maschinenbau GmbH, Fa. WINK
Industrial tax multiplier	445.00 %
Price range	from 23.00 €/m ² to 23.00 €/m ²
Regional important?	Yes



Erreichbarkeit in 20 Minuten: 41.000 Einwohner



GW_Rollesbroich.jpg

Transport connections

		Distance	
		[km]	[min]
Freeway	A44	20.8	24
Highway	B266	0.4	1
Airport	Maastrich-Aachen	74.8	52
	Liège (B)	77.1	53
Port	Liège (B)	64.4	48
	Binnenhavenweg Stein (NL)	70.5	52
Railway	Aachen-Hbf	28.3	35
	Köln-Hbf	77.0	65
Public transport	Bushaltestelle	0.5	1

Information about Simmerath

Simmerath represents an ambitious and modern community with 15,000 inhabitants. Located in the southern part of the Aachen region Simmerath is an interesting investment opportunity with excellent connection to the Netherlands, Belgium, Aachen and Cologne.

Establishing, investing and expanding business in Simmerath is supported by governmental programs in order to strengthen industry structure.

Majestic beech forests, gnarled oak trees and wild rivers: Experience pure nature in the Eifel National Park. Enhance working creativity surrounded by inspiring nature.



Links

[Gemeinde Simmerath](#)

Contact person



Mr. André Koll
Gemeinde Simmerath
+ 49 (0) 24 73/607 174
akoll@gemeinde.simmerath.de