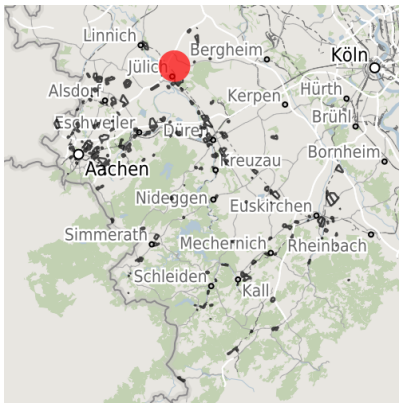


Factsheet parcel

Designation	Brainergy-Park (No. 066)
Area size	2,130 m ²
City / district	Jülich, Kreis Düren

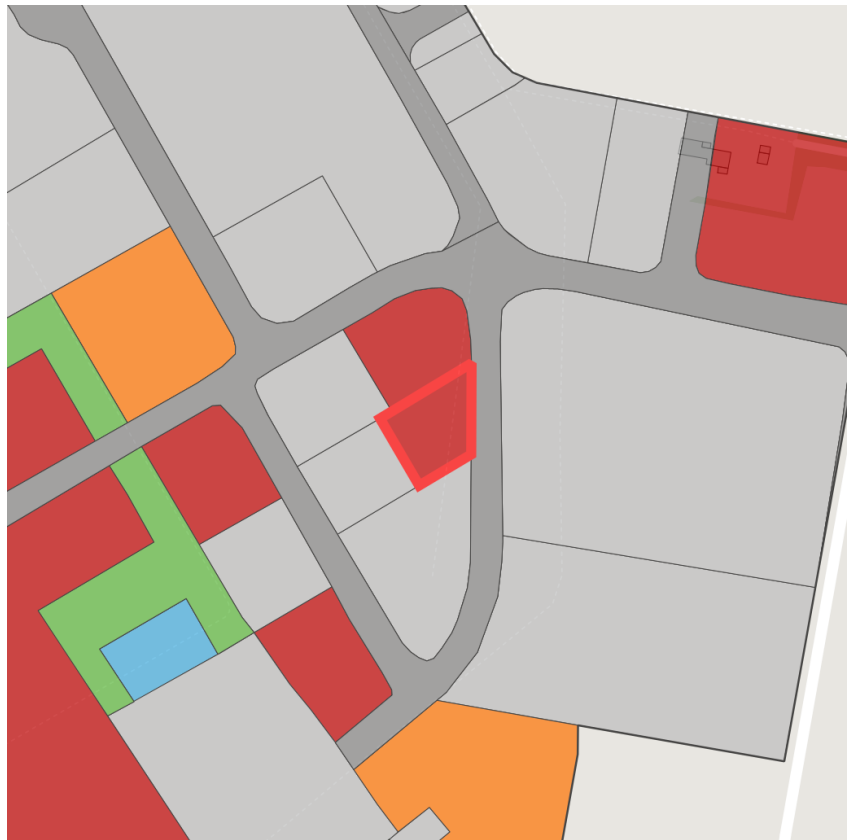
Map view



Regional overview



Municipal overview



Detail view

© [OpenStreetMap](#) contributors.

Availabilities

Immediately available area	Available area within short term (< 2 years)	Available area within medium term (2-5 years)	Available area within Long term (> 5 years)
Not available area			

Other areas

Private ownership	Water area	Rail area	Street area
Green area	Living space	disposal/supply infrastructure	Other Area

Parcel

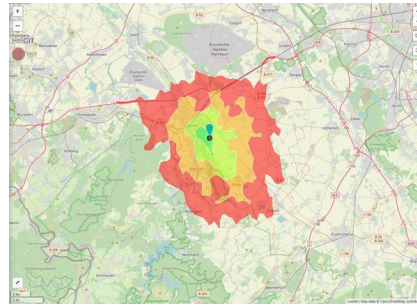
Area size	2,130 m ²
Price	On Demand
Availability	Immediately available area
Divisible	No
24h operation	No

Commercial zone

Location	Solitary location
Industrial tax multiplier	513.00 %



BPJ-Flug in die Zukunft



Erreichbarkeit in 20 Minuten: 176.000 Einwohner

Transport connections

		Distance	
		[km]	[min]
Freeway	A44	3.8	5
	A4	14.9	18
Highway	B55	2.4	3
	B56	3.8	6
Airport	Flughafen Düsseldorf	64.6	43
	Flughafen Aachen Maastricht	64.8	43
	Flughafen Köln Bonn	74.0	47

Information about Jülich

Jülich is a town with a unique research and development potential that can be found at only a few locations around the world:

The Jülich Research Centre with 4,300 employees is the biggest German research institution .

Jülich is a self-confident medium-sized centre with a wide range of shops, restaurants

and cafés in a attractive townscape attractive development areas with residential plots at favourable prices culture and ambience through a multitude of new exhibitions, theatres and concerts, The Citadel Museum and the ?Brückenkopfpark Jülich?.



Links

[Brainergy Park Jülich](#)
[Startup Village](#)

Contact person



Mr. Frank Drewes
Brainergy Park Jülich GmbH
Am Brainergy Park 1
52428 Jülich
+49 (0) 24 61 31 89 730
fdrewes@brainergy-park.de

Mr. Thomas Schmitz
Brainergy Park Jülich GmbH
024 61 – 3189 743
tschmitz@brainergy-park.de



Brainergy Park

Jülich GmbH