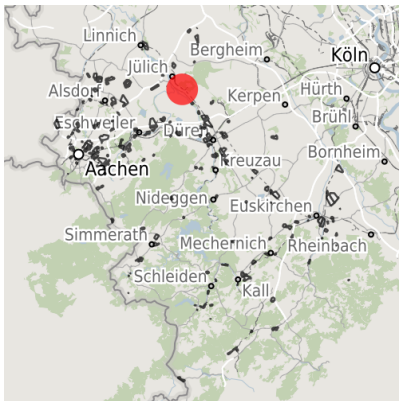


Factsheet parcel

Designation	Gewerbe- und Industriegebiet Jülich-Süd (Waldstraße) (No. 002)
Area size	29,919 m ²
City / district	Jülich, Kreis Düren

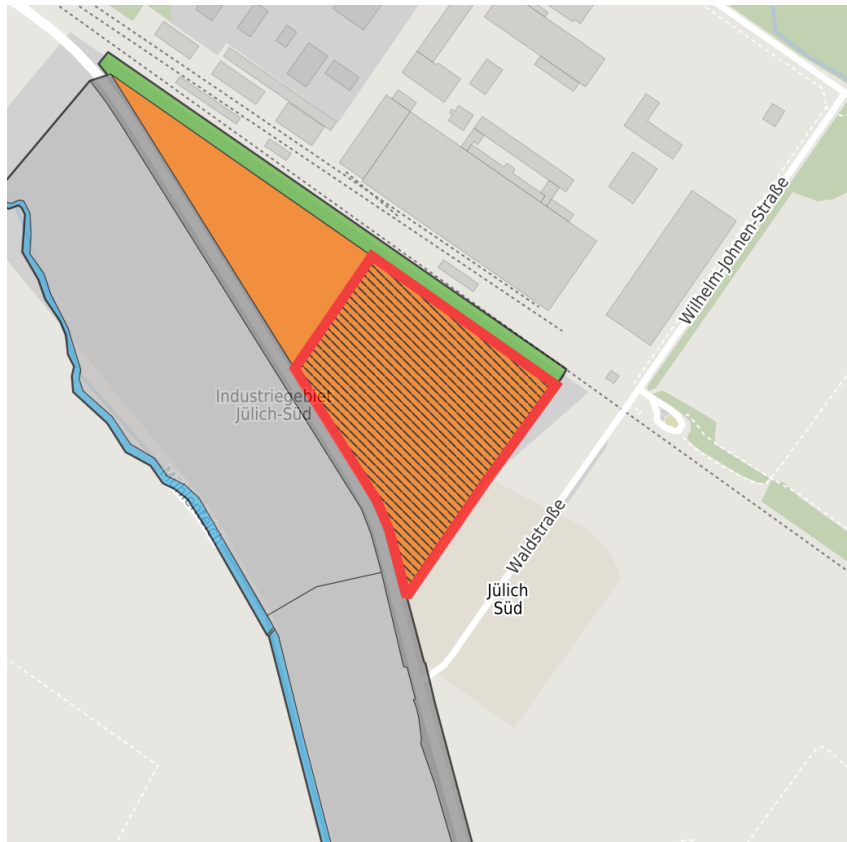
Map view



Regional overview



Municipal overview




Detail view

© [OpenStreetMap](#) contributors.

Availabilities

-  Immediately available area
-  Available area within short term (< 2 years)
-  Available area within medium term (2-5 years)
-  Available area within Long term (> 5 years)
-  Not available area

Other areas

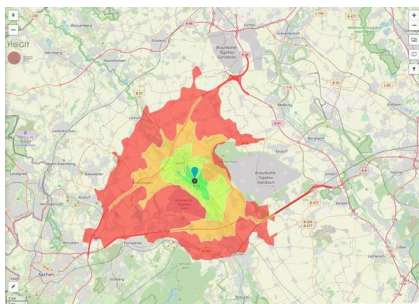
-  Private ownership
-  Water area
-  Rail area
-  Street area
-  Green area
-  Living space
-  disposal/supply infrastructure
-  Other Area

Parcel

Area size	29,919 m ²
Price	On Demand
Availability	Available area within short term (< 2 years)
Restriction	Yes
Divisible	Yes
24h operation	No

Commercial zone

Location	Solitary location
Main companies	Gissler & Pass
Industrial tax multiplier	438.00 %
Price range	from 13.00 €/m ² to 13.00 €/m ²
Regional important?	No



Erreichbarkeit in 20 Minuten: 183.000
 Einwohner

Transport connections

		Distance	
		[km]	[min]
Freeway	A44	5.0	
	A4	10.0	
Highway	L253	0.0	
Airport	Köln-Bonn	55.0	
Port	Köln	50.0	
Rail freight	Düren	10.0	
Railway	Düren	10.0	
Public transport	Bushaltepunkt	0.0	

Information about Jülich

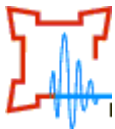
Jülich is a town with a unique research and development potential that can be found at only a few locations around the world:

The Jülich Research Centre with 4,300 employees is the biggest German research institution .

Jülich is a self-confident medium-sized centre with a wide range of shops, restaurants and cafés in a attractive townscape attractive development areas with residential plots at favourable prices culture and ambience through a multitude of new exhibitions, theatres and concerts, The Citadel Museum and the ?Brückenkopfpark Jülich?.



Contact person



Mr. Frank Drewes
Stadt Jülich
+49 (0)2461/ 63-434
FDrewes@juelich.de