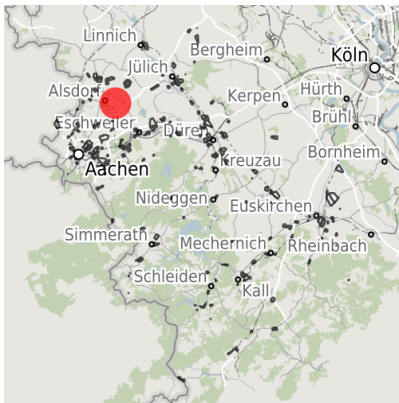


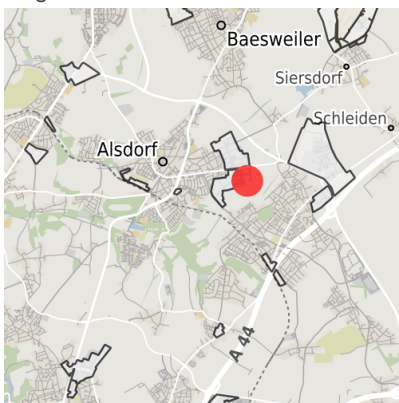
## Factsheet parcel

Designation	Gewerbegebiet Schaufenberg-Hagfeld (No. 165)
Area size	8,525 m <sup>2</sup>
City / district	Alsdorf, StädteRegion Aachen

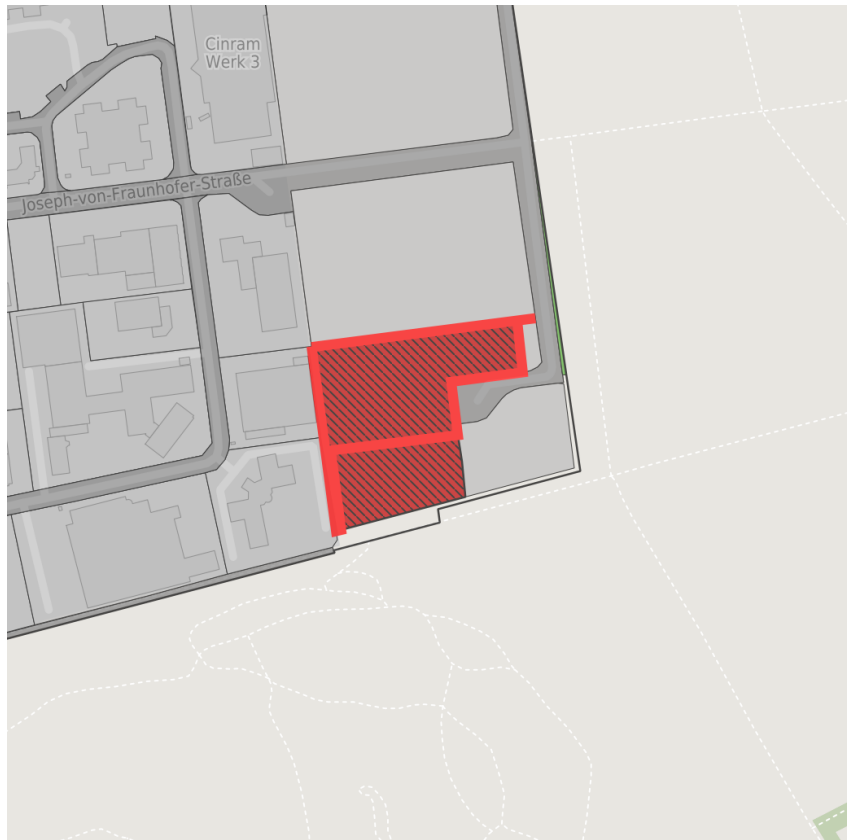
## Map view



Regional overview



Municipal overview



Detail view

© [OpenStreetMap](#) contributors.

## Availabilities

Immediately available area	Available area within short term (< 2 years)	Available area within medium term (2-5 years)	Available area within Long term (> 5 years)
Not available area			

## Other areas

Private ownership	Water area	Rail area	Street area
Green area	Living space	disposal/supply infrastructure	Other Area

## Parcel

Area size	8,525 m <sup>2</sup>
Price	On Demand
Availability	Immediately available area
Area designation	Commercial zone
Divisible	No
24h operation	No

## Commercial zone

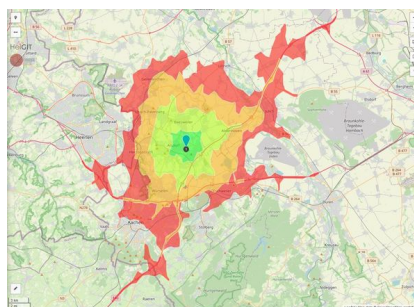
Tradition meets High-tech

Alsdorf has set its sights on structural change: new jobs must be created. Smoke and chimneys have disappeared, yet the legacy of mining remains.

Location	Outskirts
Main companies	Cinram, Trommsdorff, Veda, Mosaic-Geva, Panteon, Cycos, IGA Technologie- und Gründerzentrum, Matuschek-Meßtechnik
Industrial tax multiplier	435.00 %
Price range	from 50.00 €/m <sup>2</sup> to 50.00 €/m <sup>2</sup>
Regional important?	No



Werner-von-heisenberg-Str



Erreichbarkeit in 20 Minuten: 460.000 Einwohner

## Transport connections

		Distance	
		[km]	[min]
Freeway	A44	3.2	4
	A4	8.3	9
Highway	L57	1.0	1
	B57	1.2	2
Airport	Maastricht-Aachen	53.0	32
	Liège (B)	78.0	46
Port	Binnehavenweg Stein (NL)	52.5	33
	Holtum-Noordweg (NL)	61.5	37
Rail freight	AC-Hbf	19.9	19
Railway	Düsseldorf-Hbf	72.1	50
Public transport	Bushaltepunkt	0.7	2

## Information about Alsdorf

The town of Alsdorf offers history, recreational activities as well as an attractive living environment surrounded by the pleasant landscape of the border triangle Belgium, Germany and the Netherlands. Located between the important cities Aachen, Liège and Maastricht, various industries have settled and built up a profitable network. Numerous cultural events and the beauty of the nature make Alsdorf an interesting location for investment. The industries benefit from the large real estate sites, excellent infrastructure and modern industry structure.



## Links

[Stadt Alsdorf](#)

**Contact person**

Mr. Stephan Müller  
Stadt Alsdorf  
02404/50-378  
[stephan.mueller@alsdorf.de](mailto:stephan.mueller@alsdorf.de)