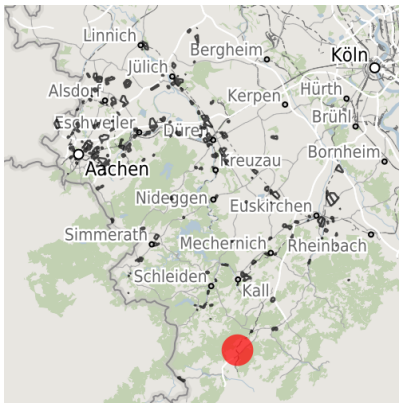


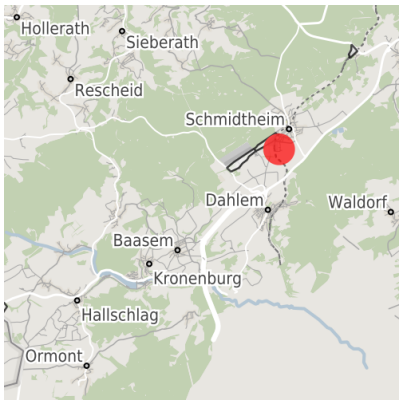
## Factsheet parcel

Designation	Gewerbegebiet Schmidtheim II (No. 001)
Area size	10,855 m <sup>2</sup>
City / district	Dahlem, Kreis Euskirchen

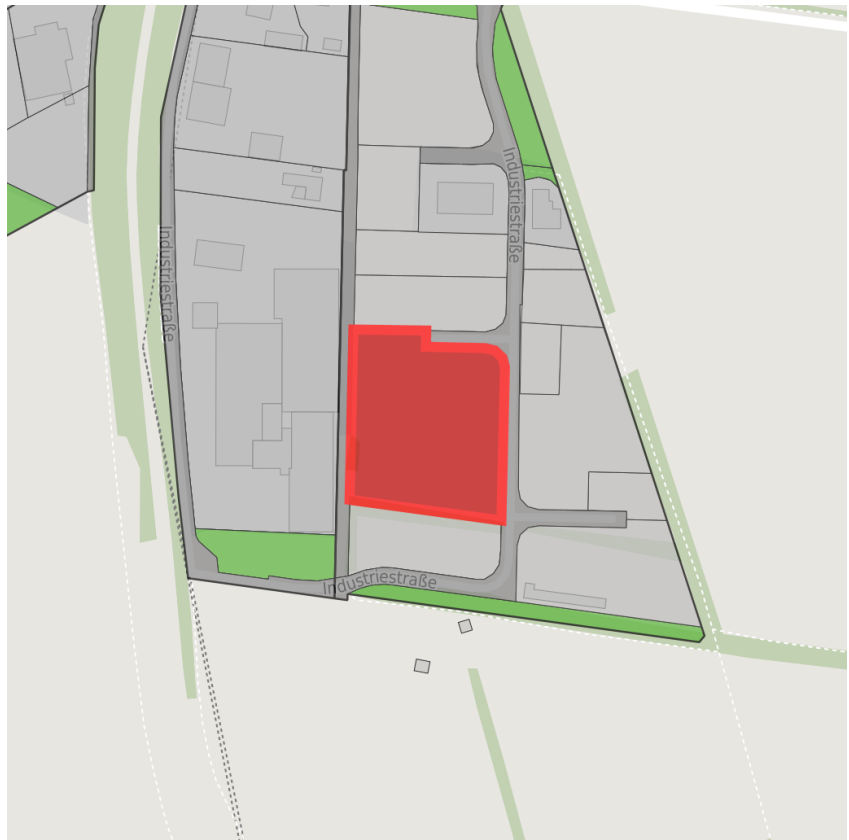
## Map view



Regional overview



Municipal overview



Detail view

© [OpenStreetMap](#) contributors.

## Availabilities

Immediately available area	Available area within short term (< 2 years)	Available area within medium term (2-5 years)	Available area within Long term (> 5 years)
Not available area			

## Other areas

Private ownership	Water area	Rail area	Street area
Green area	Living space	disposal/supply infrastructure	Other Area

## Parcel

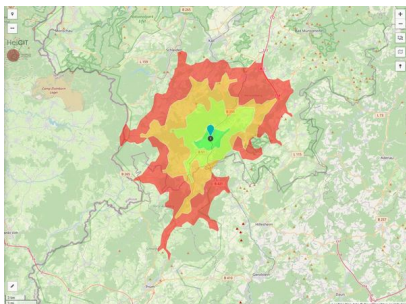
Area size	10,855 m <sup>2</sup>
Price	On Demand
Availability	Immediately available area
Area designation	Commercial zone
Divisible	No
24h operation	No

## Commercial zone

Dahlem - commercial site

On the southern outskirts of Schmidheim the municipality has a 6.7 ha commercial zone II, distinguished by its excellent transport links to the nearby economic regions Aachen - Cologne - Bonn. The lot sizes can be chosen individually as required from 1,500 m<sup>2</sup>, depending on the type of development selected.

Location	Outskirts
Industrial tax multiplier	425.00 %
Regional important?	No



Erreichbarkeit in 20 Minuten: 25.000  
 Einwohner

## Transport connections

		Distance	
		[km]	[min]
Freeway	A1	13.9	11
Airport	Köln-Bonn	85.5	54
	Düsseldorf	136.0	89
Port	Am Godorfer Hafen	70.0	47
Rail freight	Köln-Hbf	80.0	58
Railway	Köln-Hbf	80.0	58
Public transport	Bushaltepunkt	0.2	1

## Information about Dahlem

Dahlem and Oberes Kylltal (a popular vacation destination) are embedded in one of the most scenic landscapes in the entire Eifel region. Unspoilt natural surroundings, extensive leisure amenities, very competitive land prices, and attractive commercial sites ? these are Dahlem's defining characteristics.

## Links

[Gemeinde Dahlem](#)

## Contact person



Mr. Erwin Bungartz  
 Gemeinde Dahlem  
 +49 (0)2447/955-547  
 e.bungartz@dahlem.de

**Dahlem**  
 GEMEINDE IN DER EIFEL