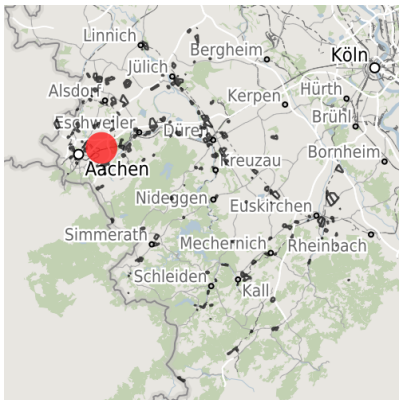


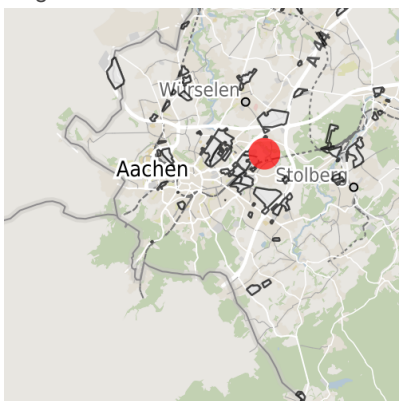
## Factsheet parcel

Designation	Nirm (No. 017)
Area size	8,760 m <sup>2</sup>
City / district	Aachen, Stadt Aachen

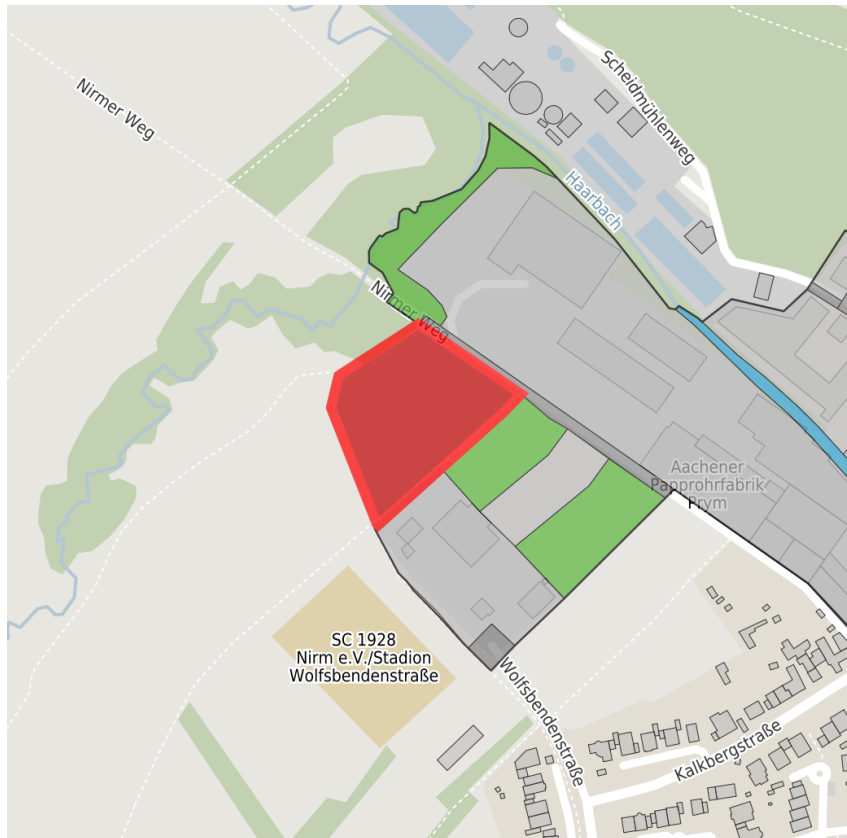
## Map view



Regional overview



Municipal overview



Detail view

© [OpenStreetMap](#) contributors.

### Availabilities

Immediately available area	Available area within short term (< 2 years)	Available area within medium term (2-5 years)	Available area within Long term (> 5 years)
Not available area			

### Other areas

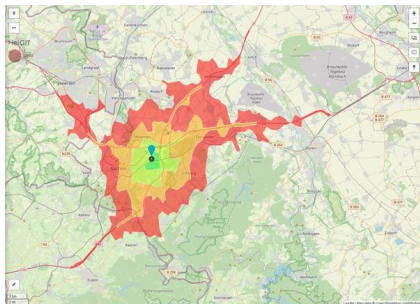
Private ownership	Water area	Rail area	Street area
Green area	Living space	disposal/supply infrastructure	Other Area

## Parcel

Area size	8,760 m <sup>2</sup>
Price	On Demand
Availability	Immediately available area
Area designation	Commercial zone
Divisible	No
24h operation	No

## Commercial zone

Location	Outskirts
----------	-----------



Erreichbarkeit in 20 Minuten: 412.000  
 Einwohner

## Transport connections

		Distance	
		[km]	[min]
Freeway	A544	2.0	
	A44	3.0	
Highway	B264	0.0	
	L23	3.0	
Airport	Maastricht-Aachen	35.0	
	Köln-Bonn	90.0	
Port	Liège (B)	40.0	
	Duisburg	115.0	
Rail freight	AC-West	8.0	
Railway	AC-Eilendorf	1.0	
	AC-Hbf	8.0	
Public transport	Bushaltepunkt	0.0	

## Information about Aachen

Aachen's successful economy is indicated by the number of high-tech companies within the region. It would be difficult to find such a concentration and variety of technical and scientific potential in any other region of Europe. Research and instruction at the highest level are provided by five centres of higher education, including the world famous RWTH Aachen University. In addition Aachen has four Fraunhofer Institutes and the largest university clinic in Europe.



## Contact person



Mr. Dieter Begaß  
Stadt Aachen  
Johannes-Paul- II.- Straße 1  
52062 Aachen  
+49 (0)241-432-7610  
[dieter.begass@mail.aachen.de](mailto:dieter.begass@mail.aachen.de)