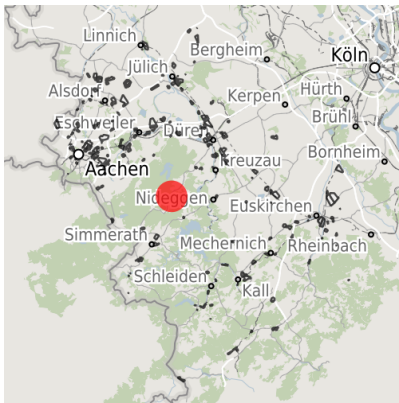


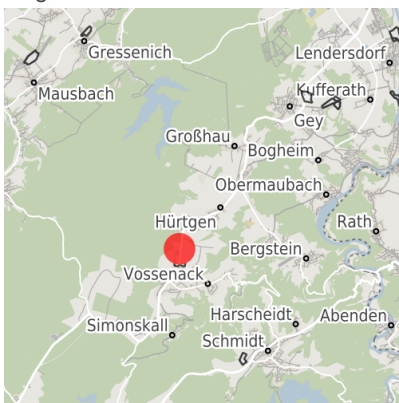
Factsheet parcel

Designation	Gewerbegebiet Vossenack (No. 026)
Area size	18,000 m ²
City / district	Hürtgenwald, Kreis Düren

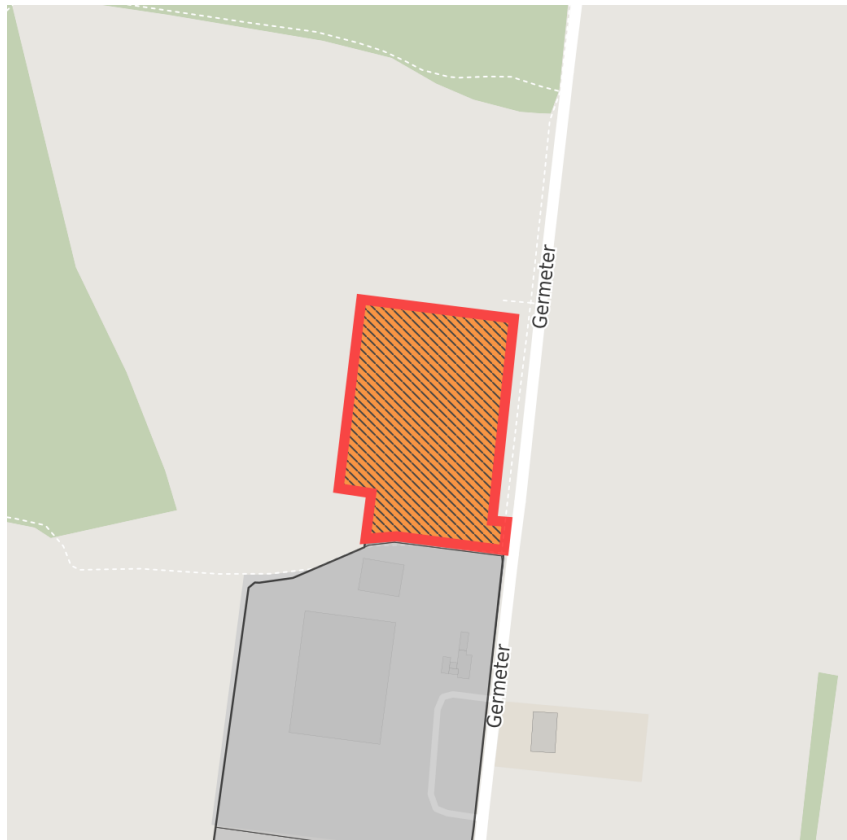
Map view



Regional overview






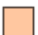

Municipal overview




Detail view

© [OpenStreetMap](#) contributors.

Availabilities

-  Immediately available area
-  Available area within short term (< 2 years)
-  Available area within medium term (2-5 years)
-  Available area within Long term (> 5 years)
-  Not available area

Other areas

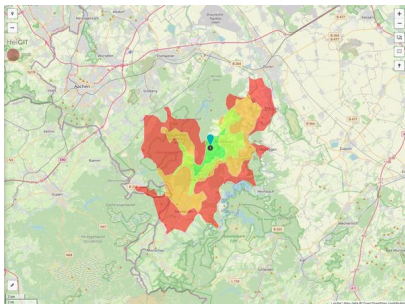
-  Private ownership
-  Water area
-  Rail area
-  Street area
-  Green area
-  Living space
-  disposal/supply infrastructure
-  Other Area

Parcel

Area size	18,000 m ²
Price	On Demand
Availability	Available area within short term (< 2 years)
Divisible	No
24h operation	No

Commercial zone

Location	Outskirts
Industrial tax multiplier	510.00 %
Regional important?	No



Ereichbarkeit in 20 Minuten: 53.000
 Einwohner

Transport connections

		Distance
		[km] [min]
Freeway	A4	38.0
Highway	B399	0.0
Airport	Köln-Bonn	83.0
Port	Köln	78.0
Rail freight	Düren	28.0
Railway	Düren	28.0
Public transport	BVR	0.0

Information about Hürtgenwald

The municipality of Hürtgenwald (an officially recognized spa resort) is situated in the German-Belgian Hohes Venn-Eifel Nature Reserve. It was formed on July 1, 1969 following the voluntary amalgamation of seven previously independent administrative entities (Bergstein, Brandenburg, Gey, Großhau, Hürtgen, Kleinhau, and Straß).

Hürtgenwald achieved its current size on January 1, 1972. As part of the municipal boundary reform it amalgamated with Vossenack (formerly part of the county of Monschau).



Links

[Internetseite der Gemeinde](#)

Contact person



Mrs. Annemarie Marx
Gemeinde
Zentrale Verwaltung, Bauamt
August-Scholl-Straße 3
52393 Hürtgenwald Hürtgenwald
NRW
02429 30956
amarx@huerigenwald.de