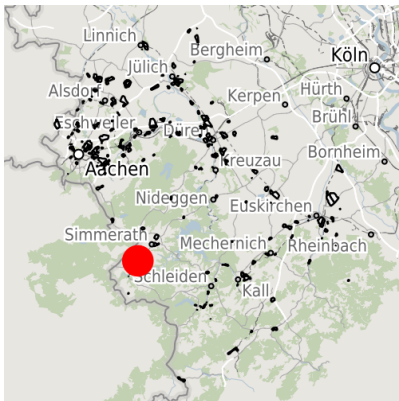


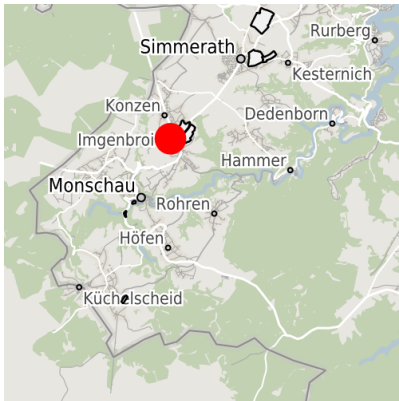
## Factsheet parcel

Designation	Gewerbegebiet Imgenbroich - Erweiterung Nord-West (No. 010)
Area size	11,165 m <sup>2</sup>
City / district	Monschau, StädteRegion Aachen

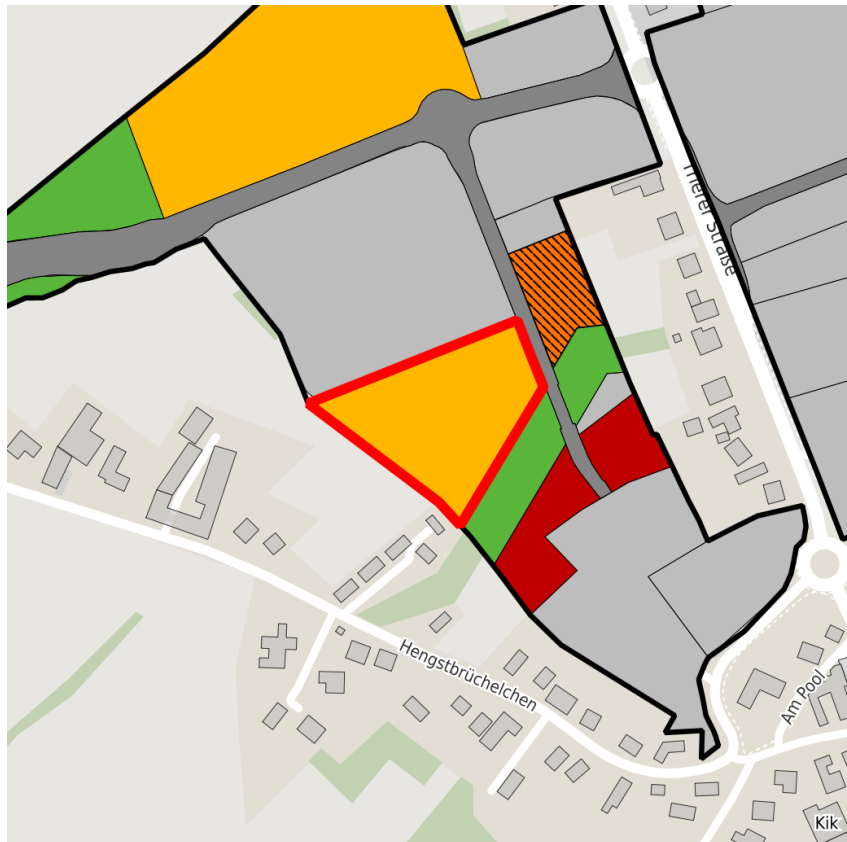
## Map view



Regional overview



Municipal overview



Detail view

© [OpenStreetMap](#) contributors.

### Availabilities

- |                            |  |   |   |
|----------------------------|--|---|---|
| Immediately available area | Available area within short term (< 2 years) | Available area within medium term (2-5 years) | Available area within Long term (> 5 years) |
| Not available area         |  |   |   |

### Other areas

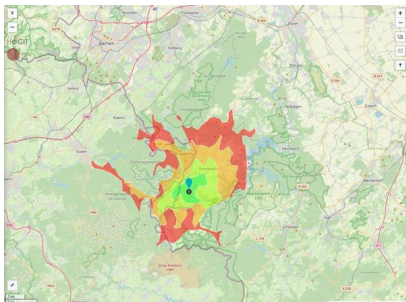
- |                   |              |                                |             |
|-------------------|--------------|--------------------------------|-------------|
| Private ownership | Water area   | Rail area                      | Street area |
| Green area        | Living space | disposal/supply infrastructure | Other Area  |

## Parcel

Area size	11,165 m <sup>2</sup>
Price	On Demand
Availability	Available area within medium term (2-5 years)
Area designation	Commercial zone
Divisible	Yes
24h operation	No

## Commercial zone

Location	Outskirts
Industrial tax multiplier	407.00 %
Regional important?	Yes



Erreichbarkeit in 20 Minuten: 35.000  
 Einwohner

## Transport connections

		Distance	
		[km]	[min]
Freeway	A3	23.8	27
	B258	0.1	1
Highway	Bushaltestelle	0.7	2
	Liège	67.0	59
Airport	Maastricht-Aachen	74.1	52
	Liège (B)	54.4	53
Port	Binnenhavenweg Stein (NL)	69.8	50
	AC-Hbf	27.7	30
Railway	Köln-Hbf	101.0	70

## Information about Monschau

The municipality of Monschau can look back on an eventful economic history. In the 18th century its textile industry enjoyed international renown. Today, Monschau ranks as one of the top tourist attractions in the Eifel region (it acquired "air spa" status in 1996). The local economy has grown strongly in recent years. The NRW state planning authorities have designated Monschau as a "regional center" serving the surrounding districts.



## Contact person

Mr. Björn Schmitz  
Stadt Monschau  
+49 (0)2472/ 81-304  
[b.schmitz@stadt.monschau.de](mailto:b.schmitz@stadt.monschau.de)